

Map of Playgrounds for Children in and around Okubo-cho

JR Okubo station

1 Okubo-cho Sadame Park

Appealing point: Good for small kids to enjoy
 Playground equipment: Slide, Sandbox, Bike spring rider
 Equipment: Drinking fountain, Bench
 Nature: Trees, Small river
 Size: Approximately 68 steps by 26 steps
 (measured by a kid's feet)

The park is small but it's nice because it has a slide.



2 Okubo-cho Shimoyamasaki Park

Appealing point: A lot of hydrangeas
 Playground equipment: Slide, Sandbox
 Equipment: Drinking fountain, Bench
 Prohibited: Discarding cigarettes
 Nature: Hydrangea
 Size: Approximately 39 steps by 37 steps
 (measured by a kid's feet)

The park is so pretty because there are a lot of hydrangeas.



3 Taniyagi-michiya Park

Appealing point:
 Playground equipment that looks like a fried shrimp
 Playground equipment: Swings, Fried shrimp spring rider
 Equipment: Drinking fountain, Bench, Nearby vending machine
 Size: Approximately 80 steps by 51 steps
 (measured by a kid's feet)

It's so fun because there are swings.



4 Wakaba Park

Appealing point: Spacious and you can play dodgeball
 Playground equipment: Slide, Sandbox, Horizontal bars, Spinning exercise equipment for adults
 Equipment: Drinking fountain, Bench, Clock
 Nature: Trees, Many cicadas
 Size: Approximately 26m by 46m

Really big, so you can play tag.



Okubo Shogakko (Elementary School)

5 Miyanosaki-minami Park

Appealing point: Fun with a lot of playground equipment
 Playground equipment: Spiral slide, Sandbox
 Equipment: Drinking fountain, Bench, Nearby vending machine
 Nature: Trees, Small river
 Size: Approximately 102 steps by 64 steps
 (measured by a kid's feet)

It's very fun with a variety of playground equipment all in one place. Let's play tag!



6 Taniyagi-nigo Park

Appealing point: Spacious and easy to play tag.
 Can accommodate a large number of people.
 Playground equipment: None, but you can play tag or hide and seek.
 Equipment: Drinking fountain, Bench
 Prohibited: Ball playing that can disturb park users and nearby houses.
 Nature: Beautiful cherry blossoms
 Size: Approximately 127 steps by 128 steps
 (measured by a kid's feet)

There is no playground equipment, but you can play tag.



7 Taniyagi-ichigo Park

Appealing point: There are cool and refreshing shady spots
 Playground equipment: Slide, Swings, Horizontal bars
 Equipment: Drinking fountain, Bench, Clock
 Prohibited: Letting balls fly out over the fences
 Nature: Many trees
 Size: Approximately 145 steps by 172 steps
 (measured by a kid's feet)

It's spacious and has fun swings



8 Taniyagi Fukuidani Park

Appealing point: Horizontal bars and good sandbox
 Playground equipment: Horizontal bars, Sandbox
 Equipment: Drinking fountain, Bench
 Size: Approximately 54 steps by 40 steps
 (measured by a kid's feet)

The park is a bit small, but it's fun to try various tricks on the horizontal bars.



Mix

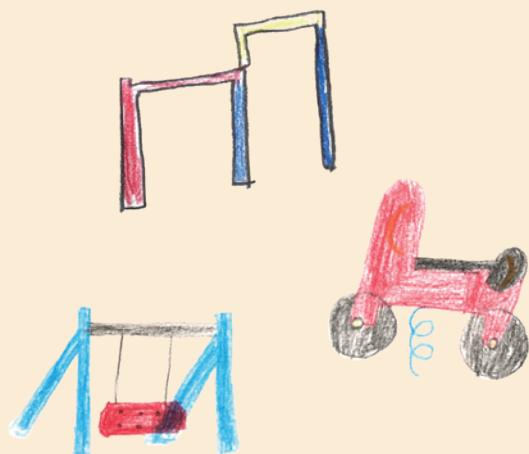
Mitsuba Certified Childcare Center

OkuboMinami Shogakko (Elementary School)

Shinkansen bullet train

Map of Playgrounds for Children

in and around Okubo-machi,
Okubo-cho, Akashi-city



Production member

Ryousei, Karen, Kousei, Mio
Miharu, Haru, Iroha, Yuito
Rui, Keiji, Yurina, Riki

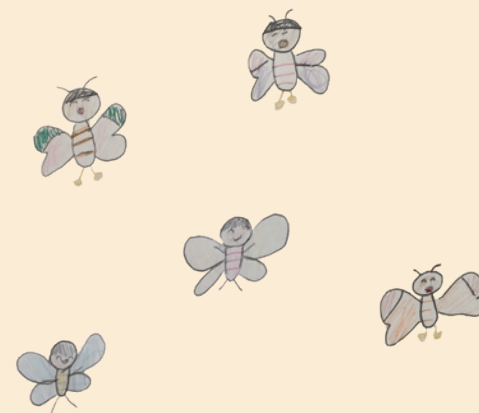


This map is available in Japanese, English,
Chinese, and Vietnamese.

Translation : Multi-cultural Center Manmaru Akashi

This project is funded by the
"2022 Akashi City SDGs Promotion Grant."

Mix Publishing Company



Our thoughts on this project

We, the members of Mix NPO,
talked about what we could do for Akashi
Sustainable Development Goals (SDGs).
In the end, we decided to publish a map of
playgrounds in and around our favorite area
of Okubo-cho, Okubo-cho, Akashi-city
so that everyone could know more
about our neighborhood.

This map is translated into 3 foreign languages
for the benefit of people from abroad.

Please use this map as a reference,
visit our playgrounds, and enjoy yourself!

